

New SmartStation SS 12 / 15

Industrial pe Computers (SS12/SS15)

SmartStation Series of industrial Computers are designed for the harshest of environments with its Aluminum casing for weight and heat dissipation is available in three different sizes. The SmartStation can be customized to meet your business needs from installation on the factory floor to vehicle mount system.



>> Applications



Wifi



GPS



Vehicle
mountable



Vibration
Test

> Specifications

Display

- **SS 12** : 12.1" TFT Touch screen display, 500 NIT
- **SS 15** : 15.0" TFT Touch screen display, 250 NIT

Environment

- **Storage Temperature** : -40° to 80 °C
- **Operating Temperature** : -20° to 60 °C
- **Humidity** : 5 % to 95 % RH Non-condensing
- **Environmental Protection** : IP54 applicable (except I/O ports)

Memory and Storage

- (1x) DDR3 (800Mhz/1066Mhz) 2GB RAM SO-DIMM socket, expendable to 4GB

Microprocessor

- Intel® Atom™ Processor D2550 (1M Cache, 1.86GHz)

Operating Systems

- Windows XP, 7, 8

Network Characteristics

- 10/100/1000 base-T Ethernet
- **Option** - Cisco Compatible 802.11 a/b/g/n radio with industry standard wireless security protocols

Hard Disk Drive Options

- SATA II 500GB Hard Disk or Higher
- SSD 64GB or Higher

Interface

SS12

- (3) COM Ports
- (1) DVI port

SS15

- (1) VGA port
- (1) Audio 3.5mm stereo / Microphone jack

SS12 & SS15

- (5) DSUB 9 COM Ports
COM1 Port with RS-232/422 selection
- (4) USB ver 2.0 Host
- (1) Soft shutdown On/Off Switch
- (2) RJ45 Ethernet ports
- (1) HDMI port

Power

- AC/DC Adapter input AC 110/220V, output DC 12V (60 watts)
- **Option** – External DC/DC Converter input 10-60V, output 12V (60 watts)

Certifications

CE, FCC



SmartStation 10



SmartStation 12



SmartStation 15

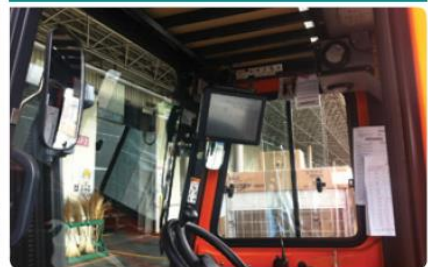
Port Yard



Factory



Forklift



Airport



Container



Truck

